

MONUMENTAL MINISTERIAL TRAINING

PANORAMA

ROD & SHERRY BOYD
SPRING 2019
VOLUME 27 • NUMBER 1

We're so grateful for all who have stood with us in prayer and financial support these last few months! You have made possible **monumental** accomplishments in our ministerial training program across the Spanish-speaking Latin America / Caribbean region.

Monumental SUPPORT... \$300,000 was given in just that last six months! The \$200,000 anchor gift from a north central church covered the construction of the second floor of the housing building, adding 13 new guestrooms, laundry and guest laundry (see *LARTC Progress, Plans and Present Focus* on the reverse side). Then so many of you responded to the LARTC \$50,000 Matching Challenge, helping us furnish guestrooms and laundry and continue construction of the Phase Three Atrium. And so many joined with us in praying for the two important meetings of educational leaders at the Center the middle of March.

Monumental MEETING... Your support made it possible for the LARTC to *fully host* both the 2019 Educational Leaders Dialogue (March 11-14) followed by the International Leadership Team Meeting (March 15-16). We had 46 leaders attend representing 15 countries. This Dialogue was our largest ever! We housed our guests and Sherry and crew prepared delicious meals that helped us lower our costs by 60%! One of our former superintendents shared, "We're staying in the Five-Star Pentecostal Hotel!"

Monumental GROWTH... We enjoyed hearing both victories and challenges that each country faces in their ministerial training programs. This segment includes statistical information. We rejoice in the 12.6% increase from 47,750 in 2016 to 53,757 in 2018, an increase of more than 6,000 new harvest workers in training! We believe that God is going to use our Latin American brothers and sisters to reach our world!

Monumental DEVELOPMENT... We've spent hundreds of hours during the last 20 months preparing to forge an agreement with two different Christian universities to provide an international accreditation covering. The Lord guided our deliberations and directed our steps, helping us to make two Acts 15:28 decisions... "It seemed good to the Holy Spirit and to us..." In the coming months, we'll share more about these strategic partnerships and why they are so important.

Monumental GOALS... We challenged our leaders with **Plan 2033**. We are using the occasion of the church's 2,000 year birthday to set goals and identify challenges. As members of the Assemblies of God World Hispanic Fellowship's Leadership Team, we hear church planting and missions program goals and projections and remind our leaders of how foundational training and preparation is to evangelism, church planting and missions. We have challenged our leadership team to hone our ministries to make them more relevant, responsive and ready for the growth that God will require for us to produce the number and kind of harvest workers that He needs for the harvest!

Monumental PRAYER AND GIVING... Once again, thank you for praying and giving. Please don't stop! The task is still unfinished! We need you more than ever to help us raise up Christian leaders throughout Latin America, to prepare global harvest workers who are shaping future generations.

Rod and Sherry

There's more on the reverse side... Eastridge Launches LARTC Phase Four and LARTC Progress, Plans and Present Focus



*Prayer Needs & Praise Reports
Eastridge Launches LARTC Phase Four
LARTC Progress, Plans and Present Focus
on the reverse side!*

Complete stories and photos at
www.Boyd.org

Panorama@Boyd.org • www.Boyd.org • [Field Address](#) Apartado 0818-00792, Panama, PANAMA
[Stateside Address](#) 21004 28th Ave. West, Lynnwood, WA 98036 • AGWM Account 2392710



EASTRIDGE LAUNCHES LARTC PHASE FOUR CONSTRUCTION

Thank you Pastor Larry Murrell and Eastridge Church (Issaquah) MAPS Construction Team! You launched construction of the 5,200 sq. ft. Phase Four Training/Administration Building Addition. Our two years of use have helped us identify how best to utilize this new space! The addition will provide three new classrooms, a larger library, future elevator, additional bathrooms, flexible administration space and a shop/storage room.

The generous construction offering from Eastridge allowed us to erect columns, begin second floor crossbeams, trusses, purlins and roofing sheets. What a blessing to have the roof on before the team arrived! This protected the team from not only extreme heat, but also from the first downpour of the season.

The team worked side-by-side with our Panamanian crew to lay the first floor exterior block walls (including a large storage/shop room), the second story wall that is shared with the atrium and extend the perimeter security wall an additional 100 feet! It was impressive to see how much they accomplished and how quickly this small group worked.

The team also spent two mornings assisting with the distribution of NTV Action Bibles in three schools, with more than 600 children who not only received a beautiful hard cover Bible that includes more than 100 full-color pages of Bible stories inserted alongside the Bible text, but also encouragement to: 1) take care of and respect their new Bible, 2) read and study their new Bible, and most importantly 3) unconditionally obey God's Word.

The team also ministered at the Christ Refuge and Salvation Church, a new church located at

the entrance of the LARTC property. One year ago, the Bakersfield First Assembly conducted a medical outreach in the new building. Pastor Larry ministered to more than 75 members of this new, growing congregation.

The team enjoyed a day of touring Panama City, visiting the "old helmet" French Quarters, the Panama Canal and the Gamboa Rainforest Reserve exhibits.

Thank you Pastor Larry, Don, Allie, Linda, Keith, Linda, Zachary and Dagney, for your incredible investment in the LARTC and in Panama!

LARTC PROGRESS, PLANS AND PRESENT FOCUS

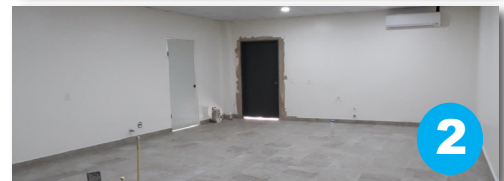
PROGRESS... With a miraculous offering and six months of work we finished a stairwell, thirteen new guestrooms, guest laundry and laundry facilities on the second floor of the Phase Two Housing building. The \$50,000 matching fund offering and nearly that amount in offerings allowed us to fully furnish the guestrooms with 35 new beds, closets, desks, chairs, kitchenettes (in two suites), stack washer/dryer for the guest laundry and a washer/dryer set for staff laundry. Thank you to all who had a part in this!

PLANS... 2019-2020 goals and budget:

- ❑ **\$150,000 - Phase Three Atrium...** concrete floor, back and side walls with stucco, back glass panels (windows), decorative columns, front windows and glass doors, concrete floor, bridge/mezzanine structure, concrete floor and tile, electrical, plumbing, interior doors, lighting, air conditioning, etc.
- ❑ **\$50,000 - Phase Two Commercial Kitchen...** Appliances, islands, cabinets, counters, pantry shelving, furnishings, etc.
- ❑ **\$75,000 - Phase Four Training/Admin Building Addition...** second story crossbeams, exterior wall block and stucco, first and second story concrete floor and tile, windows, electrical, plumbing, interior sheetrock walls, interior doors, etc.
- ❑ **\$75,000 - Outside work...** Building façade, soffits, paint, perimeter security wall, front entrance/gate/guardhouse, roads, parking, lighting, drainage, landscaping, etc.

PRESENT FOCUS... This quarter, as funds permit, we will complete the following:

1. **Atrium...** concrete floor, bridge/mezzanine I-beams, decorative columns, front windows/doors.
2. **Kitchen...** purchase appliances, islands, cabinets, counters and shelving.
3. **Training/Admin Addition...** second floor crossbeams, storage/shop roof.
4. **Continue perimeter security wall.**



PRAYER NEEDS & PRAISE REPORTS

- ❑ Praise the Lord! Thirteen new guestrooms, laundry and guest laundry were finished and inaugurated the second week of March with nearly 50 guests participating in the 2019 Educational Leaders Dialogue and International Leadership Team meetings following!
- ❑ Please pray for planning efforts for four important international events: June 2019 - Educators Summit in Colombia; Sept 2019 - CIECAD Christian School Congress in Panama; April 2020 - Educators Summit in Guatemala; and Aug. 2020 - Educators Summit in Chile.
- ❑ Praise the Lord for the work of the Eastridge Church (Issaquah, WA) MAPS construction team that launched construction of the 5,200 sq ft training/administration addition!
- ❑ Please pray for the more than 250 Panamanian children who need a Childhope sponsor. Please visit: www.ChildHopeOnline.org.
- ❑ Please continue to pray for generous offerings for continued construction of the Atrium, commercial kitchen and training/administration addition. Please visit www.lartc.net for updates.